

Our Philosophy

Our Mission

Jahjumbeen Uniting Early Learning Centre acknowledges and pays respect to the Turrbul and Yuggera People, the traditional owners of this land on which we live and educate our children. Together we acknowledge the contributions of the Indigenous Australians to the education of all children in our Country.

At Jahjumbeen Uniting Early Learning Centre, we strive to stay true to our name and provide children with a nurturing place to play, learn, thrive and grow. We endeavour to promote a genuine sense of inclusive and supportive community for all children, families and members of staff.

Child Safe Practices

We believe that every child has the right to a safe and nurturing learning environment where they feel valued for who they really are. We promote care, compassion, respect for diversity, collaboration, sustainability, and a sense of joy and wonder. Above all, we are committed to safeguarding every child, ensuring they are protected from harm, listened with care, and supported to grow, learn and thrive.

Community

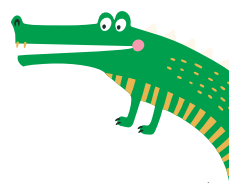
We value our community as an extension of our learning environment. Our centre is a place where children, families, educators, and the wider community come together to build strong, respectful relationships. We celebrate the diversity of the families we serve and embrace opportunities to connect with local groups, services, and cultural leaders. Through these partnerships, children learn that they are part of a vibrant community where every person contributes and belongs.

We Meet Quality Standards

We are open and honest communicators and value feedback. We are constantly building upon our skills and knowledge and value reflective practice. We work collaboratively in partnership with each other to enhance inclusions, learning and wellbeing. Every opportunity is explored to support continuity of care for our children through long term employment of educators.


Play is Key

We make sense of our world through play. We co-create and learn from one another as we play. We make connections between real life experiences, prior learning and new experiences as we play. We are learning to think outside the box. Our unique set up allows us to provide opportunities for indoor and outdoor play that support children's interests, learning and development.



Our Philosophy

We pave our path to learning, one step at a time:

-  **Care for environment**
Sustainability is a lifelong practice. We work together in maintaining a clean and safe place where we all thrive. We care for our environment and promote sustainable life choices. Our play reflects our understanding of the world around us. Nature is a great provider of resources for learning.
-  **Compassion**
We understand the importance of affection, kindness and compassion. We promote and practice values such as empathy and generosity. We care for each other.
-  **Joy and Wonder**
We are natural adventurers, curious learners, and thoughtful investigators. We make time for joy and wonder providing environments and experiences that inspire creativity. We reflect on experiences to extend our learning.
-  **Engagement**
We are competent and capable individuals. We enjoy learning through authentic and relevant opportunities. We are constantly building upon our skills and knowledge We are all ready to take risks at times
-  **Collaboration**
Our families are the most important people in our lives. We have established respectful relationships with families. We build partnerships with them and collaborate in implementing our educational program. We celebrate our shared times as an opportunity to connect with each other and our local community in a relaxed and joyous environment.
-  **Respect for Diversity**
Every story is unique. We recognise, respect and celebrate different outlooks in life, diverse cultures, values and beliefs. We build a strong sense of community.

