

# Our Philosophy

The Philosophy of Uniting Early Learning Kirwan arises out of the stated purpose of Jesus Christ “to give life in all its fullness” (John 10:10).

At UEL Kirwan, we believe our role is to understand that each child is unique, individual and they learn and develop in their way, also at their own pace. We believe children learn through open-ended play that allows them to engage in exploration, investigation and experimentation.

We offer a welcoming, safe and clean environment where children can feel safe and secure as they make connections with people, their natural and man-made environments.

We support all children’s development, rights and needs through intentional, spontaneous, and child-initiated educational experiences, using resources that promote the independence, agency and development of the “whole” person.

NQS Element 7.2.1 “A statement of philosophy is developed and guides all aspects of the service’s operations.”

Thus, we believe our role is to understand that each child is unique, individual and they learn and develop in their way, also at their own pace.

We believe children learn through open-ended play that allows them to engage in exploration, investigation and experimentation.

We will offer a welcoming, safe and clean environment where children can feel safe and secure as they make connections with people, their natural and man-made environments.

We will support all children’s development, rights and needs through intentional, spontaneous, and child-initiated educational experiences, using resources that promote the independence, agency and development of the “whole” person.

We believe children need positive role models who will guide them with praise/acknowledgment, encouragement and care towards becoming confident individuals and social beings. Children will build friendships by treating each other with respect, kindness and empathy. They will develop a positive self-image as they learn of and respect the diversity of cultures in Australia through a cross-cultural, anti-discriminatory, inclusive curriculum that encourages positive attitudes towards gender equity and equal opportunity.

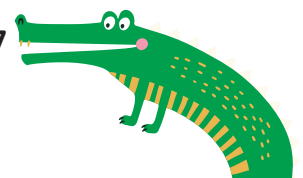
We recognise the importance of each child’s family, culture and beliefs, also acknowledge that families are the principal influence in their child’s life.

We acknowledge the Bindal and Wulgurukaba people as the First Nations people of this area.

We will develop a respectful relationship through open, honest and informative communication to help enhance the parent/caregiver-child relationships. Each family is important, and we aim to support parents/caregivers in the care and upbringing of their children.

We hope to develop each family’s sense of belonging by involving them in all aspects of the centre.

We will share information and listen to families as we interact daily through various communication styles, face to face, email, phone calls and Story Park.



# Our Philosophy

As Staff, Parents and Uniting Early Learning, we have a mutual responsibility to act in every child's best interest.

We are also committed to ensuring the highest level of Occupational Health and Safety.

We believe that the quality of the service is directly related to how it is staffed.

We will employ qualified, friendly educators who possess knowledge of the emotional and developmental needs of the children, the ability to support families, work as part of a team and through professional development, we aim to enhance their knowledge and skills.

We recognise that a high standard of nutrition and hygiene plays a big part in the children's wellbeing, balanced with an active lifestyle and experiences.

We commit ourselves to ongoing evaluation and reflection of our practices and the practice of the service as a whole. We welcome feedback from all the services stakeholders, especially the children and ensure their voices are heard.

We hope that each family will feel unique, valued and heard, as they experience the universal love of God through association with our Centre.

